



2014 Product Catalog

Smile, you've just found your favorite supplier!

SWIVEL PROBE

Part Number: FD-SWVP

Dimensions: 1.6" x 0.6" x 0.3"

Imprint Area: 0.8" x 0.4"

Available colors: Silver



SWIVEL DRIVE

Part Number: FD-SWV

Dimensions: 2.1" x 0.7" x 0.4"

Imprint Area: 0.9" x 0.5"

Available colors: Match any PMS color!



MICRO SWIVEL

Part Number: FD-SWV2

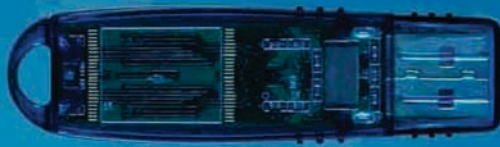
Dimensions: 1.4" x 0.5" x 0.2"

Imprint Area: 0.9" x 0.3"

Available colors: Black



Our products are built and assembled in our facility in Texas. Our facility allows us to have a full in house process which includes printing, packaging, quality control, data uploading and chips/casing assembly. We also offer full post sales state-side support for any warranty issues that might occur. We are at approximately 1% failure rate on all units shipped.



PROFESSIONAL CLASSIC

Part Number: FD-PRO
Dimensions: 2.67" x 0.67"
Imprint area: 1.4" x 0.5"
Available colors: Red, Silver, Blue, Black, Pearl, Clear Red, Clear Smoke, Clear Blue, Clear White, White



ELLIPSE CLASSIC

Part Number: FD-ELL
Dimensions: 2.7" x 0.8" x 0.3"
Imprint area: 1.5" x 0.5"
Available colors: Clear Red, Clear Smoke, Clear Blue, Clear White, Clear Green



ELLIPSE-TD CLASSIC

Part Number: FD-ELLTD
Dimensions: 2.2" x 0.8" x 0.3"
Imprint area: 1.1" x 0.4"
Available colors: Clear Red, Clear Smoke, Clear Blue, Clear White, Clear Green



GLOW

Part Number: FD-GLOW
Dimensions: 2.8" x 0.8" x 0.4"
Imprint area: 0.7" x 0.4"
Available colors: White



URBAN

Part Number: FD-RUB
Dimensions: 2.9" x 0.9"
Imprint area: 1.5" x 0.5"
Available colors: Black

USB LASER DRIVE

Part Number: FD-LSR
Dimensions: 3.5" x 0.9" x 0.6"
Imprint area: 0.6" x 0.6"
Available colors: Silver/Black



CLASSIC MINI

Part Number: FD-CLSM2
Dimensions: 2.3" x 0.8" x 0.5"
Imprint area: 0.8" x 0.7"
Available colors: Red, Blue, Black, White, Orange, Green

PROFESSIONAL SHORT

Part Number: FD-PROS
Dimensions: 2.2" x 0.7" x 0.2"
Imprint area: 0.8" x 0.4"
Available colors: Red, Black, Silver, Blue, White



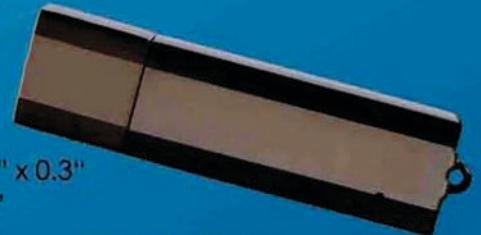
ALUMINUM

Part Number: FD-ALU
Dimensions: 2.5" x 0.6" x 0.3"
Imprint area: 1.5" x 0.4"
Available colors: Fuchsia, Silver Blue, Black, Gray



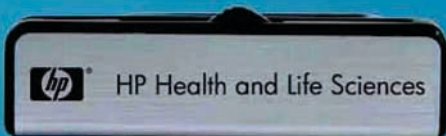
ACE

Part Number: FD-SLA
Dimensions: 1.9" x 0.7" x 0.3"
Imprint area: 0.9" x 0.5"
Available colors: Silver



EXECUTIVE

Part Number: FD-PEX
Dimensions: 2.2" x 0.5" x 0.2"
Imprint area: 1.2" x 0.3"
Available colors: Charcoal



RETRACTABLE

Part Number: FD-RET
Dimensions: 2.3" x 0.7" x 0.3"
Imprint area: 1.9" x 0.4"
Available colors: Silver/Black

No Setup charge / Free two color imprint
 Free data upload up to 50MB
 Free PMS match / Free virtual proof
 Coded price sheet customized with your logo
 Limited lifetime warranty

Use our *free data upload service to preload catalogues, marketing materials or product specifications. We build our product line with tier 1 chips only, Samsung Micron, Hynix providing the highest reliability. Lead time 7 to 10 working days from the PO date and artwork approval. Send us your project artwork and we will send you a free virtual proof within one hour.



ALUMINUM STRIPE

Part Number: FD-STR1
Dimensions: 2.64" x 0.78" x 0.38"
Imprint area: 1.18" x 0.59"
Available colors: Red, Black, Yellow, Blue, Green



PLATINUM CURVE

Part Number: FD-CRV3
Dimensions: 1.9" x 0.9" x 0.5"
Imprint area: 1.3" x 0.6"
Available colors: Blue, Green



Bamboo style b1

Part Number: FD-BMB1
Dimensions: 2.3" x 0.8" x 0.3"
Imprint area: 1.4" x 0.59"



Bamboo style b5

Part Number: FD-BMB5
Dimensions: 2.7" x 0.8"
Imprint area: 1" x 0.4"



Bamboo style b6

Part Number: FD-BMB6
Dimensions: 2.4" x 1.1" x 0.4"
Imprint area: 1.4" x 0.9"



Bamboo style b2

Part Number: FD-BMB2
Dimensions: 2.1" x 1.1" x 0.3"
Imprint area: 1.25" x 0.9"



Bamboo style b7

Part Number: FD-BMB7
Dimensions: 2.3" x 0.7" x 0.4"
Imprint area: 1.4" x 0.6"



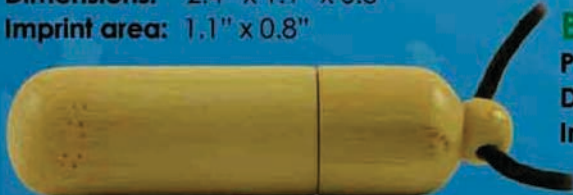
Bamboo style b3

Part Number: FD-BMB3
Dimensions: 2.4" x 1.1" x 0.3"
Imprint area: 1.1" x 0.8"



Bamboo style b4

Part Number: FD-BMB4
Dimensions: 2.8" x 0.7"
Imprint area: 1.3" x 0.4"



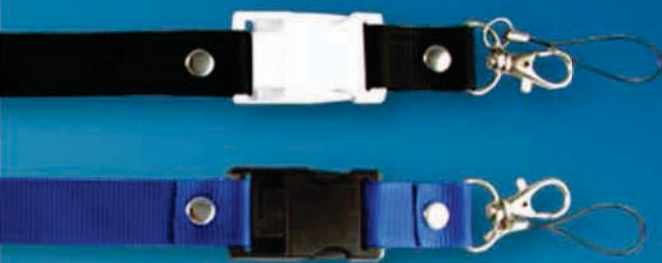
Bamboo style b9

Part Number: FD-BMB9
Dimensions: 2.3" x 1.1" x 0.4"
Imprint area: 0.7" x 1"



Bamboo style b10

Part Number: FD-BMB10
Dimensions: 2.2" x 0.8" x 0.5"
Imprint area: 1.7" x 0.6"



Lanyard Drive

Part Number: FD-LAN

Dimensions: 31.50" X 0.79"

Imprint area: 29.92" X 0.67"

Imprint area: 0.75" X 0.70"

Available colors: Black, Blue, Lt Gray



Leather Drive S4

Part Number: FD-LTH4

Dimensions: 2.99" X 0.98"

Imprint area: 1.26" X 0.47"

Imprint area: 1.02" X 0.47"

Available colors: Black, Brown



Credit Card Drive 2

Part Number: FD-CCD2

Dimensions: 3.34" x 2.12"

Imprint Area Front: 2.95" x 1.73"

Imprint Area Back: 2.75" x 0.98"

*Available in FULL color



Wristband style m

Part Number: FD-WRBM

Dimensions: 8.2" x 0.7"

Imprint area: 5.5" x 0.5"

Imprint area: 1" x 0.6"

Available colors: Black, Red, Blue, Green, Orange, White, Yellow



Credit Card Drive 3

Part Number: FD-CCD3

Dimensions: 3.34" x 2.12"

Imprint Area Front: 3.34" x 2.12"

Imprint Area Back: SAME

*Available in FULL color

Leather Drive S2

Part Number: FD-LTH2

Dimensions: 3.5" x 1.06" X 0.3"

Imprint area: 0.39" x 0.9"

Available colors: Black, Brown



Leather Drive S3

Part Number: FD-LTH3

Dimensions: 3.3" x 1.2"

Imprint area: 1.7" x 0.74"

Available colors: Black, Brown



Wristband style l

Part Number: FD-WRBF

Dimensions: 8.6" x 0.4"

Imprint area: 0.7" x 0.6"

Imprint area: 0.4" x 0.6"

Available colors: Black, Red, Blue, Green, Orange, Yellow



USB Pen style p4

Part Number: FD-PEN4

Dimensions: 5.6" x 0.6"

Imprint Area: 1.0" x 0.4"



Leather Drive S1

Part Number: FD-LTH1

Dimensions: 3.5" x 0.9" X 0.3"

Imprint area: 1.3" x 0.5"

Available colors: Black, Brown

USB Pen style p2

Part Number: FD-PEN2

Dimensions: 5.6" x 0.6"

Imprint area: 1.1" x 0.4"

Available colors: Black, Silver, Red



USB Pen style p5

Part Number: FD-PEN5

Dimensions: 5.7" x 0.6"

Imprint area: 1.1" x 0.4"

Available colors: Black